

Facts & Figures

- ◁ 8th leading cancer site among Filipino males.
- ◁ 90% to 95% of stomach cancers are adenocarcinomas
- ◁ Usually in late stages when symptomatic
- ◁ Early detection is the best way to improve survival

When in doubt,
consult your
friendly surgeon*

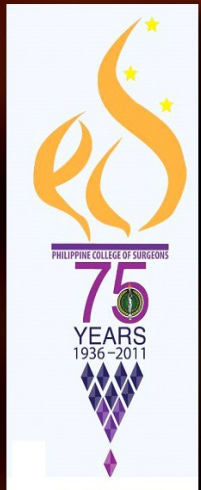


* A surgeon who is a Fellow of the **Philippine College of Surgeons** has undergone accredited surgical residency training and passed certifying board exams.

Published by
PHILIPPINE COLLEGE OF SURGEONS
3/F PCS Building, Quezon City
Phone 927-4973 / 927-4974 / 928-1083
Fax 929-2297
Email pcs@pcs.org.ph
Website <http://www.pcs.org.ph>



PHILIPPINE COLLEGE OF
SURGEONS



Risk Factors

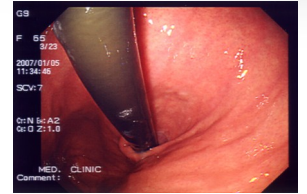
- ◁ Helicobacter pylori (H. pylori) bacteria seems to be a major cause of stomach cancer
- ◁ Chronic gastritis
- ◁ Diet high in salty and smoky food
- ◁ Low fiber diet

Symptoms

- ◁ Unexplained weight loss
- ◁ Lack of appetite
- ◁ Epigastric pain
- ◁ A sense of fullness just below the chest bone after eating a small meal
- ◁ Heartburn, indigestion, or ulcer-type symptoms
- ◁ Vomiting, with or without blood
- ◁ Abdominal enlargement

Diagnosis

- ◁ Upper endoscopy
- ◁ Upper gastrointestinal series
- ◁ Endoscopic ultrasound (EUS)
- ◁ Computed tomography
- ◁ Magnetic resonance imaging



Treatment

- ◁ Surgery
- ◁ Chemotherapy
- ◁ Radiation Therapy