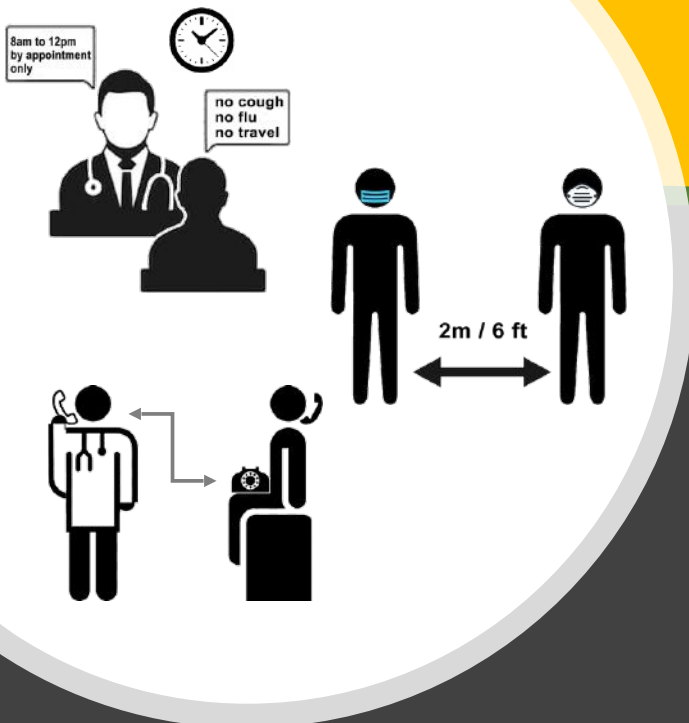




Back to Clinic Advisory

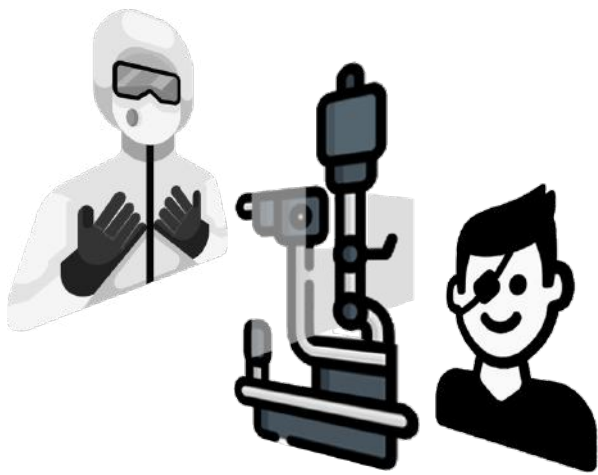
In anticipation of return to work clearance by health authorities, the following are recommendations for patient clinics and eye centers



Clinic Hours



- Shorten clinic hours, prioritize the more urgent consultations. Encourage scheduling of patients on a “By Appointment” basis for better and safer patient flow and interval.
- Maintain social distancing at all times.
- Require everyone to wear a facemask.
- When possible, conduct all clinic interviews over phone.
- Always begin interview with asking history of coughing, sneezing, sore throat, flu-like symptoms, history of travel, history of travel by members of household, and history of quarantine; If symptomatic, send to triage; If asymptomatic but inadequate quarantine, advise to complete quarantine period.



Clinic Hours



- For untested or positive patients, dedicate a special time when there will be no other patients or arrange for a virtual consult by phone or video consult if possible. Home visits may be an alternative using protective equipment.
- Provide every patient a printed set of house rules for better communication. Periodic reminders by house staff is recommended.
- When possible, allow only the patient inside the clinic and inform the patient that you will be conducting your conversation at a minimum.
- Always wear face mask, disposable gloves and face shield (if applicable) when doing examinations.
- Conduct slit lamp exam using modified breath shield.

Clinic Hours

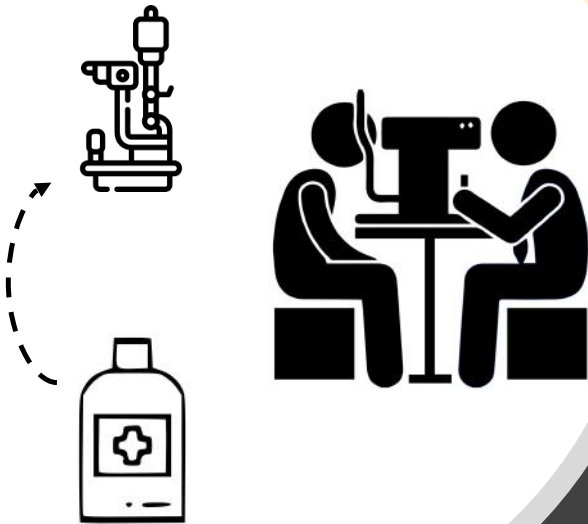


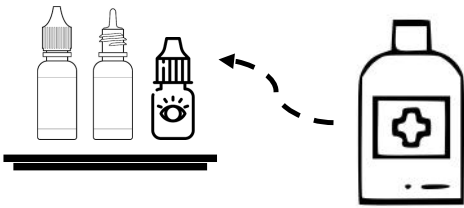
- Remove gloves immediately after slit lamp / eye exam before touching other items. Follow your hospital or clinic procedures in the disposal of medical / biological waste.
- For non-disposable items, wipe thoroughly with 1:100 bleach dilution or disinfecting solution after each consult.

Clinic Hours



- For slit lamp and similar machines, disinfect forehead strap, chin rest, table surfaces, and all other surfaces that the patient may have touched during the examination by preferably using a 1:100 dilution bleach wipe or 70% isopropyl/ethyl alcohol.
- If using an applanation tonometer, it is advisable to use disposable tonometer tips or protective sheathing for immediate dispensing. Regular tonometers must be soaked in a 1:10 dilution bleach for no more than 5 minutes after each use.





Clinic Hours



- When using eye drops, never allow the tip to touch the patient's lids or eye lashes. Remember to disinfect with 1:100 dilution bleach wipes all multi-dose eye drops after use and always store in a segregated area on a tray lined with a cloth soaked in nontoxic sterilizing solution.
- Always observe **HAND WASHING** before and after every patient.

Clinic Hours



- Maximize the gap between follow-up consultations with instructions on how to contact you or your staff.
- When possible, provide a certificate that the patient has an appointment with you for convenience when traveling.



Clinic Hours



- Require patients to call clinic in case they become symptomatic within 2 weeks of consultation to warn staff, doctors, other patients.
- Medical representatives and non-essential personnel are banned from premises.





Clinic Staff



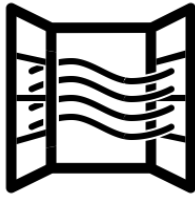
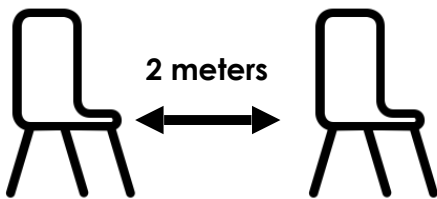
- If you have more than one assistant or staff member, stagger the schedules on a weekly or bi-weekly basis.
- Provide orientation seminars on preventive measures in the clinic, when using public transportation, and at home. Please refer to the existing Protocols for Entering and Exiting Homes.
- Everyone must change to a clean uniform and shoes (or booties) upon arrival at the clinic.
- Ensure you have adequate stocks of surgical masks, sanitizing compounds and wash hands regularly.



Clinic Staff



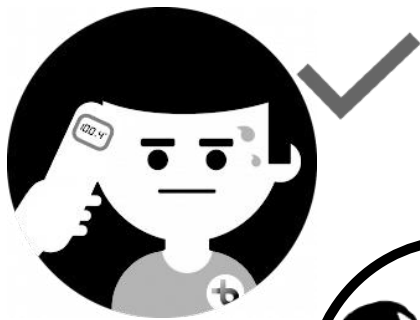
- Discourage congregating during breaks and meals. Staggered breaks enforced with social distancing in well ventilated areas.
- Staff with cough, fever, sore throat, flu-like symptoms, and diarrhea should stay home and get tested or self-quarantine. The same should be followed for those with definite exposure to COVID positive patients or suspects.
- Clinic / center may provide hazard pay.
- Avoid cash payments if feasible. Always sanitize hands immediately after handling cash / credit cards. Cash should be stored in a closed container.



Physical Arrangements



- Space between chairs must be at least 2 meters apart and not facing each other.
- Discourage loitering.
- Provide sanitizers / alcohol dispensers all around the premises and within easy reach.
- Maintain adequate ventilation. Close door from corridor of patients. Open windows and allow fan or exhaust to blow out air.
- For enclosed areas with no open windows, portable exhaust fan with HEPA (High-efficiency particulate air) filters.



Clinic Procedures



- Temperature – should be part of your pre-examination procedure. Use judgment in treating patients with fever using precautionary measures or advise self-quarantine.
- Blood Pressure / Heart rate – may be dispensed with to minimize patient contact.
- Minimize touching of patient.

Clinic Procedures



- Have a ready step-by-step process to minimize contact and time spent with patient. Use clinical judgment on what routine tests can be eliminated without prejudice to patient's health.
- Using a condensing lens in the slit lamp is better than direct funduscopy.





Surgical Procedures



- When possible, always use N-95 masks in the OR. If patient is not suspected of active COVID infection, regular antiseptic techniques followed in the operating room should suffice in most instances of local anesthesia.
- Please refer to guidelines for elective and emergent eye conditions for patients with active infection.
- Recommended precautions as stated previously will apply.



Surgical Procedures



- It is advisable that all personnel not wearing an N-95 mask should vacate the room during intubation, extubation, and any procedure that can cause aerosolization of small particles (eg. suctioning). Anesthesiologist must follow guidelines issued by the PSA.
- Please refer to advisories concerning the re-use and re-sterilization of N-95 masks.



Clean at the End of the Day



- All furniture and fixtures must be wiped using a 1:100 dilution of bleach or sanitizing solution.
- All non-disposable instruments must be wiped with 1:100 dilution of bleach or sanitizing solution.
- Repeat disinfection of slit lamps, forehead straps, chin rests and instrument surfaces using 1:100 dilution of bleach or sanitizing solution
- Mop floors with 1:100 dilution of bleach.
- Change shoes outside clinic. Advise everyone to observe recommended "Protocol for Entering Homes".