

Facts & Figures

- 8th leading cancer site among Filipino males.
- 90% to 95% of stomach cancers are adenocarcinomas
- Usually in late stages when symptomatic
- Early detection is the best way to improve survival

When in doubt,
consult your
friendly surgeon*

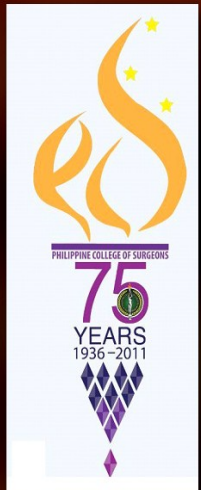


* A surgeon who is a Fellow of the **Philippine College of Surgeons** has undergone accredited surgical residency training and passed certifying board exams.

Published by
PHILIPPINE COLLEGE OF SURGEONS
3/F PCS Building, Quezon City
Phone 927-4973 / 927-4974 / 928-1083
Fax 929-2297
Email pcs@pcs.org.ph
Website <http://www.pcs.org.ph>

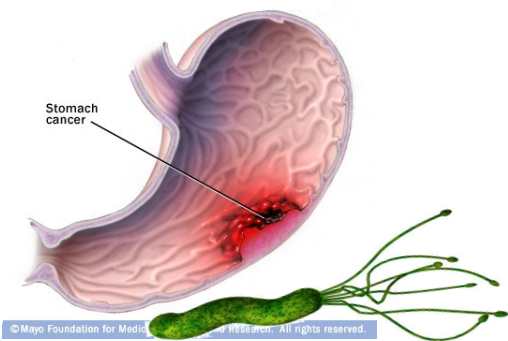


PHILIPPINE COLLEGE OF
SURGEONS



Risk Factors

- Helicobacter pylori (H. pylori) bacteria seems to be a major cause of stomach cancer
- Chronic gastritis
- Diet high in salty and smoky food
- Low fiber diet



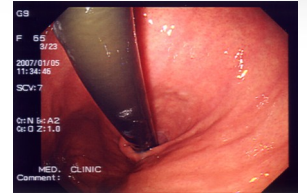
Symptoms

- Unexplained weight loss
- Lack of appetite
- Epigastric pain
- A sense of fullness just below the chest bone after eating a small meal
- Heartburn, indigestion, or ulcer-type symptoms
- Vomiting, with or without blood
- Abdominal enlargement



Diagnosis

- Upper endoscopy
- Upper gastrointestinal series
- Endoscopic ultrasound (EUS)
- Computed tomography
- Magnetic resonance imaging



Treatment

- Surgery
- Chemotherapy
- Radiation Therapy